



Installation Instructions

Model E20408-20PC

IMPORTANT SAFETY INFORMATION

WARNING Before starting the installation, disconnect the power by turning off the circuit breaker or removing the fuse at the fuse box.

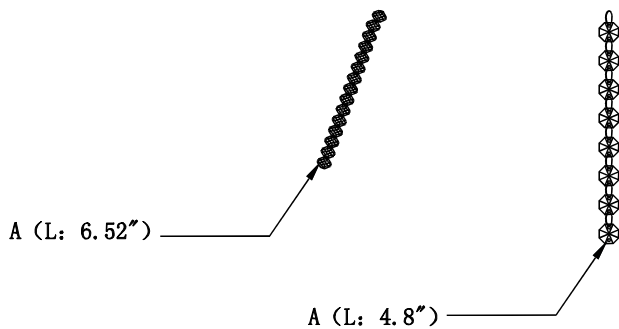
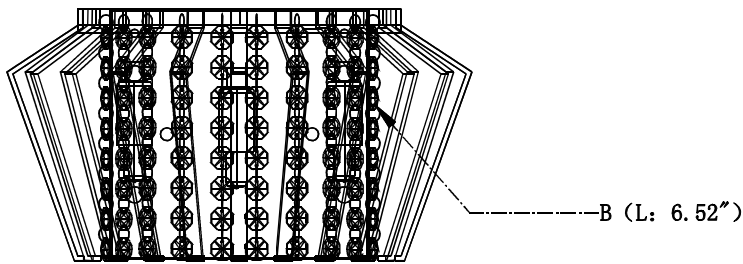
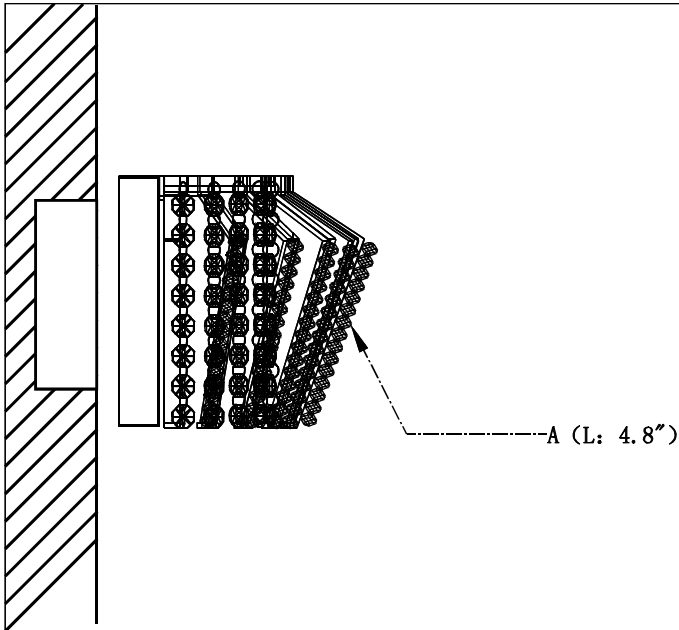
Proper wiring is essential for the safe operation of this fixture. All electrical connections must be in accordance with local codes, ordinances or the National Electrical Code. If you are unfamiliar with methods of installing electrical wiring, secure the services of a qualified licensed electrician.

Fixture must be grounded to avoid potential electrical shocks.

This fixture is designed for use in 120 volt, 60hz, fused circuits.

1. Turn breaker off for circuit on outlet where fixture is to be installed.
2. Attach cross bracket to outlet box bringing wire through inner hole in bracket.
3. Install crystal strings A to metal rings.
4. Wire fixture and push excess wire into box. Install fixture to mounting bracket and tighten screw (Diagram 2).
5. Install 40 watt G9 xenon bulbs by gently pushing into socket.

(Caution: Xenon bulbs get very hot and may burn you. Always make sure bulbs are off for a minimum 10 minutes before handling)



CRY Code	MAXIM CRY#	CRY Code	MAXIM CRY#
A	CR20400A-Q	B	ECRY20400-L

