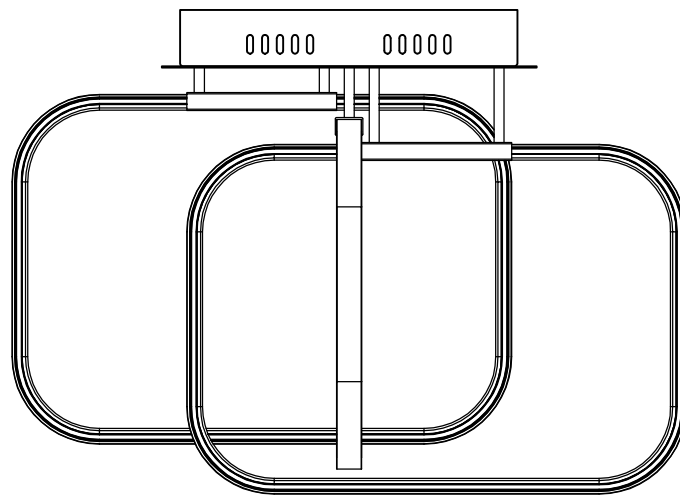




Contemporary Lighting

PRODUCT NAME: Squared
ITEM NUMBER: E24551-PC

Please consult your electrician for hanging fixture and wiring.



The fixture is designed to dim with a standard Triac forward phase dimmer. Dimming levels will vary by dimmer.

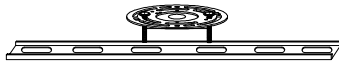
Below is a list of recommended dimmers:

- Lutron MACL-153M
- Lutron DVL-153P
- Lutron SCL-153P
- Leviton IPL06-10Z
- Leviton 6674-POW

Due to inrush current wattage should not exceed 150 watts of product for a 600 watt dimmer.

Warning: Wires need to be connected to driver found in canopy and should not be connected directly to power source or a short may occur.

IMPORTANT: Turn off the power at the main fuse or circuit breaker box before starting installation



(A)
Mounting Bracket

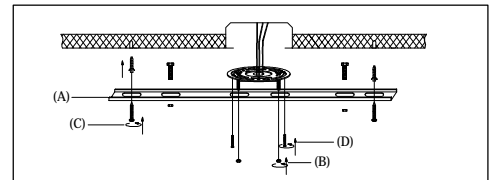
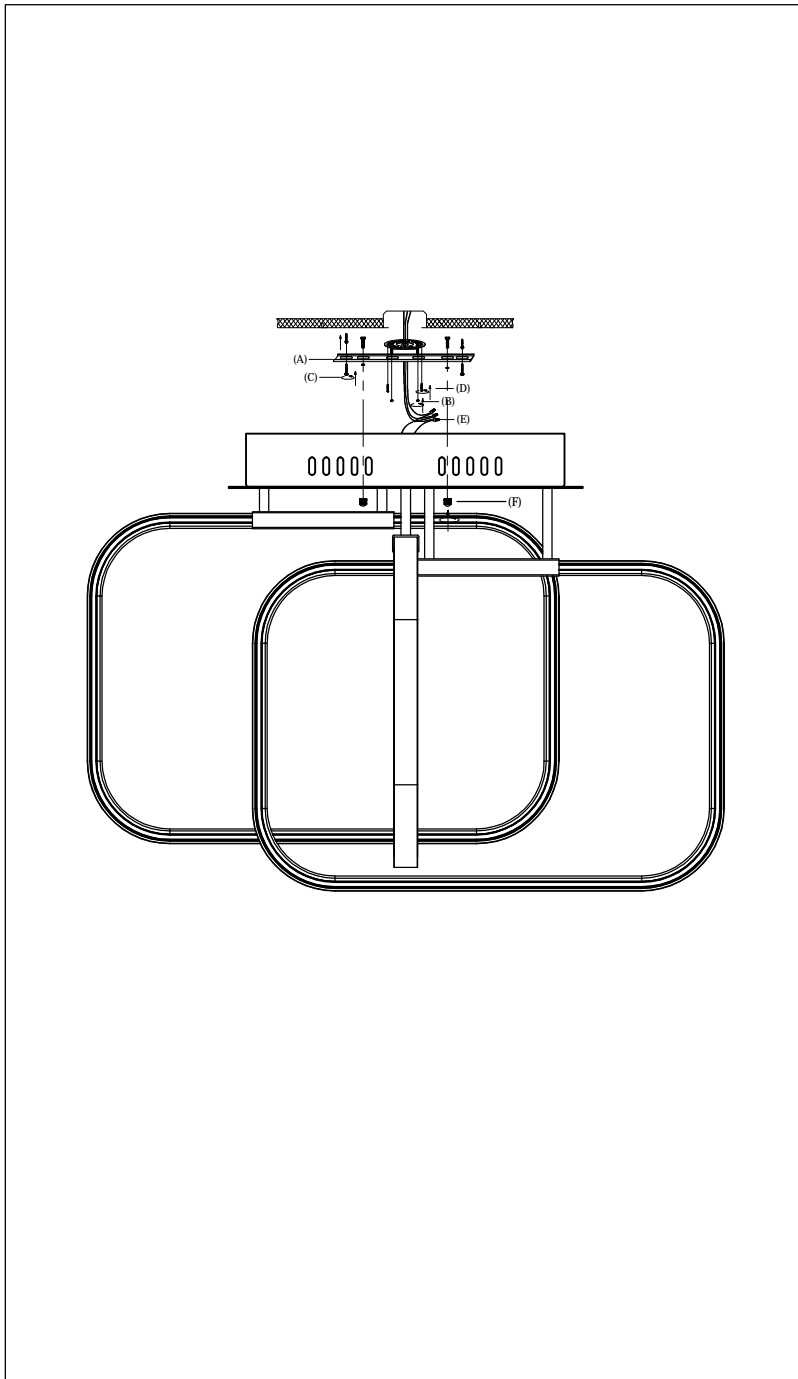


(C)
Anchors



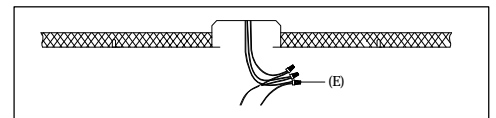
(F)
Finial

Locate all hardware & components before discarding packaging



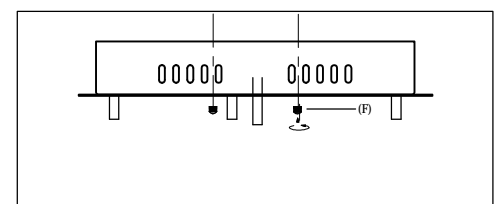
1.)

Step.1: Remove mounting bracket(A) from fixture and install to electrical box. Mark where anchors(C) at ends of bracket meet the ceiling. Remove mounting bracket from ceiling. Drill holes using $3/16" \pm$ drill bit where marked. Install mounting bracket(A) to outlet box and attach anchors(C) to secure bracket at ends.



2.)

Wire fixture to wires in outlet box. Green/Copper wire is for Ground.



3.)

Install fixture to bracket and tighten finials(F) on the canopy to secure.

Cleaning & Care:

Clean with soft cloth and a mild detergent.
Do not use abrasive cleaner.