



PRODUCT DESCRIPTION

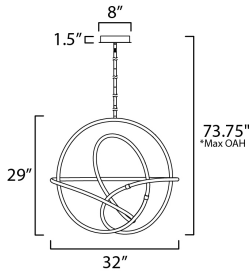
A seamless loop of light and metal, the Mobius loop pushes boundaries with a non-orientable surface. Encased in a hand formed etched acrylic tube a innovative, omnidirectional LED light strip brightly illuminates. Inspired by artisanal metal knot decor, the LED pendants provide both functional light and create interest in their form. Finished in Natural Aged Brass and completed with a two-tone black and brass canopy, this fashion-forward lighting sculpture is sure to make a statement.

MEASUREMENTS

DIMENSION : 32" L x 27" W x 29" H
MAX OAH : 73.75" OAH
CANOPY : 8" W x 1.5" H x 8" L
HANGING WEIGHT : 11.68 lb

LAMPING

INPUT VOLTAGE : 100-135V
LUMENS : 3,510 Rated (3,220 Del.)
BULB : 1 x 40.3W LED PCB Integrated , 40W Total
BULB INCLUDED : (Integrated)
DIMMABLE : ELV
CRI : 90 CRI
COLOR_TEMP : 3000K



*max overall height

FINISHES OPTION

 Black / Gold (BKGLD)

GLASS

White 01

MATERIAL

Steel + Aluminum+Acrylic

RATINGS

cETLus
Dry Location



ADDITIONAL

RATED LIFE 40000 Hours
OPERATING TEMPERATURE:
-20°C (-4°F), 40°C (104°F)

Always consult a qualified electrician before installing any lighting product.



Contemporary
Lighting™

WESTERN DISTRIBUTION CENTER (HEADQUARTER)
253 NORTH VINELAND AVE | CITY OF INDUSTRY, CA 91746
EASTERN DISTRIBUTION CENTER
101 GARDNER PARK | PEACHTREE CITY, GA 30269
P. 626.956.4200 | F. 626.956.4225 | maximlighting.com