

iQ | WIZ Controlled Smart Light  
E31258

- Anodized Brushed Black finish
- Color Ambience tuning (RGB) plus white tunable
- CRI 90+
- Controlled through Wiz app

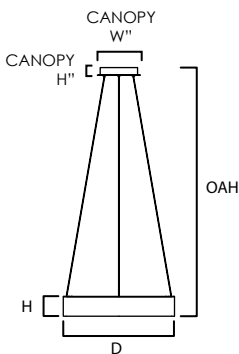
Job Name : \_\_\_\_\_  
Job Type : \_\_\_\_\_  
Quantity : \_\_\_\_\_  
Comments : \_\_\_\_\_



PRODUCT DESCRIPTION

Rings finished in Brushed Black are fitted with a specially formed acrylic diffuser that evenly diffuses advanced LED light engines. The lighting is connected by WIZ with functions that include changing colors and brightness and programming various routines via the WIZ app or compatible smart home devices. To unlock all these incredible features, download the WIZ app or pair with smart home devices such as Amazon Echo or Google Assistant.

- Always consult a qualified electrician before installing any lighting product
- Installation Requirements:  
Ceiling fan attaches to electrical junction box securely anchored and capable of withstanding at least 35 lbs



MEASUREMENTS

MODEL	DIMENSION
E31258	23.5"D x 4.25"H, 126"OAH

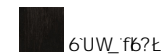
CANOPY	HANGING WEIGHT	WIRE LENGTH
9"W x 1.5"H x 9"L	9.3 lb	120"L

LAMPING

MODEL	BULB TYPE	CRI	LUMENS RATED	DEL	INPUT	COLOR TEMP
E31258	50W PCB LED (Integrated)	90+	3500	2800	120-277V	RGBW Y

1 V6 b f c ~ Y X ~ h f c i [ \ ' K j n U d d

FINISHES OPTION



MATERIAL:

Aluminum + Steel + Acrylic

RATINGS:

W9H# g  
8fm'cWUhc b'  
8ja a UVY fk jh'K -N  
V6a dUqVY'XYj jW'cfUddE'  
75 HnY'&(')



ADDITIONAL:

RATED LIFE: 50,000 hours  
OPERATING TEMP: -20° C (-4°), 40° C (104°F)



QR code to Wiz App



**WESTERN DISTRIBUTION CENTER (HEADQUARTER)**  
253 NORTH VINELAND AVE | CITY OF INDUSTRY, CA 91746  
**EASTERN DISTRIBUTION CENTER**  
101 GARDNER PARK, | PEACHTREE CITY, GA 30269  
P. 626.956.4200 | F. 626.956.4225 | maximlighting.com